

APPENDIX "C"

QUALITY CONSTRUCTION. TRUSTED SERVICE.



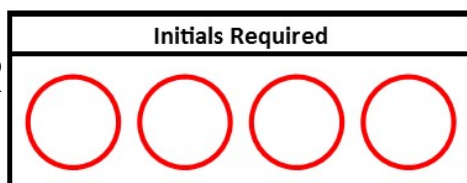
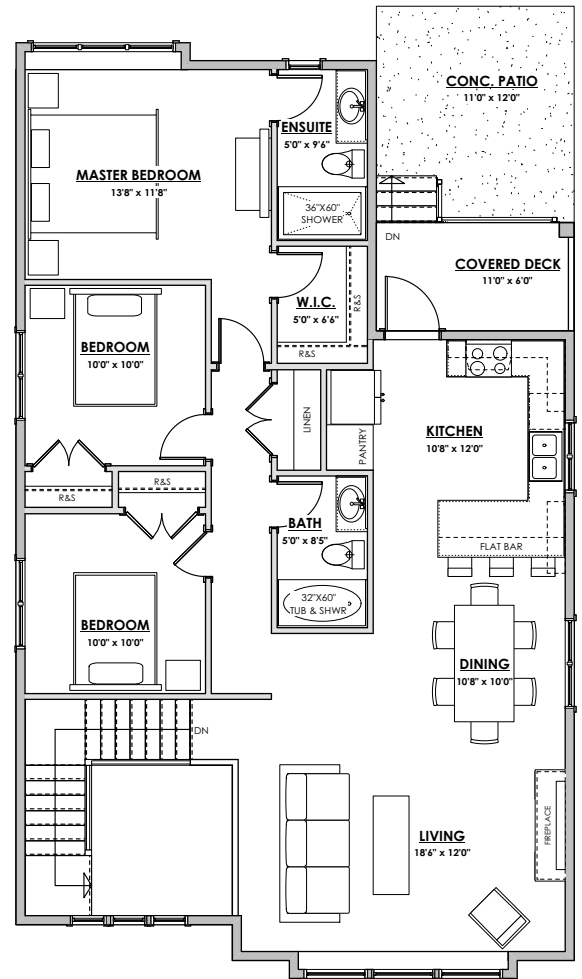
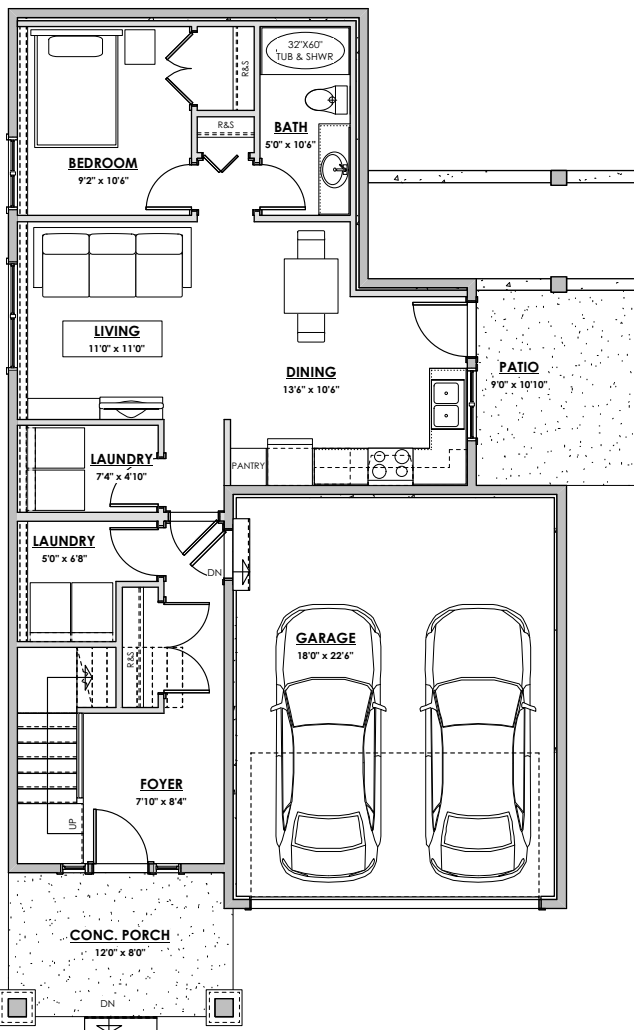
**LOT 48**  
**213 CASPIAN DRIVE**  
**'NAUTICAL' COASTAL**

\*NOTE: In the interest of maintaining high standards, the developer reserves the right to modify plans, specifications and design without prior notice. Drawings contained within are artist renderings only.

Sizes and dimensions are approximate and may vary with actual plan and survey. Exterior style may change pending municipal approval.

Retaining wall location and types may vary and are subject to municipal, engineering or developer discretion. Subject to change without notice.

Furniture as shown on plans are for layout purposes only and are not included in the sale.



<b>LIVING AREA</b>	
Primary:	1454 sq.ft.
Suite:	620 sq.ft.
Total:	2074 sq.ft.
<b>OTHER</b>	
Garage:	447 sq.ft.

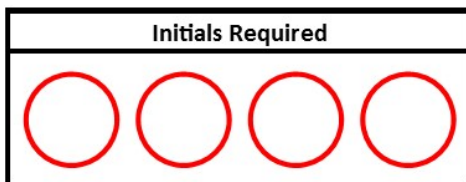
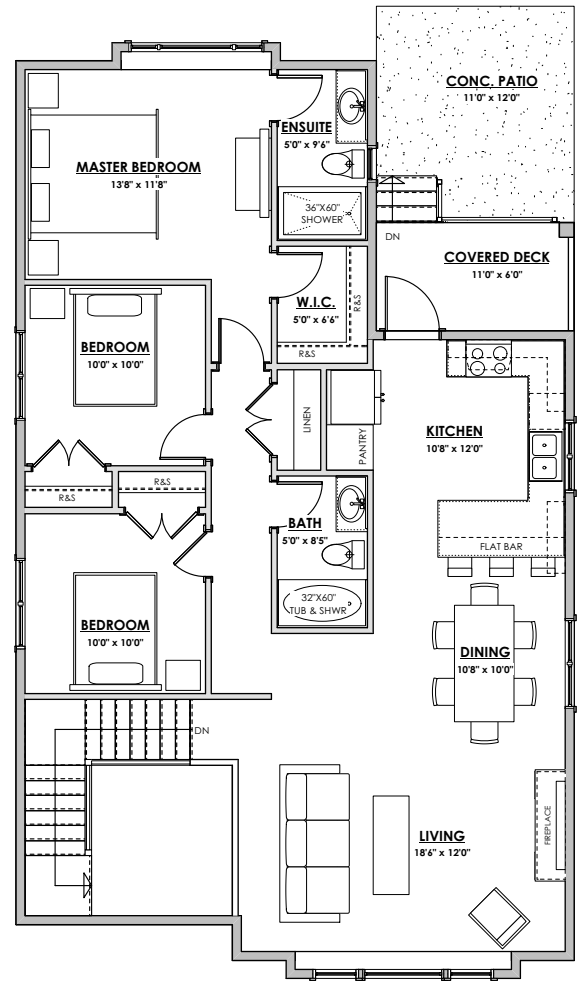
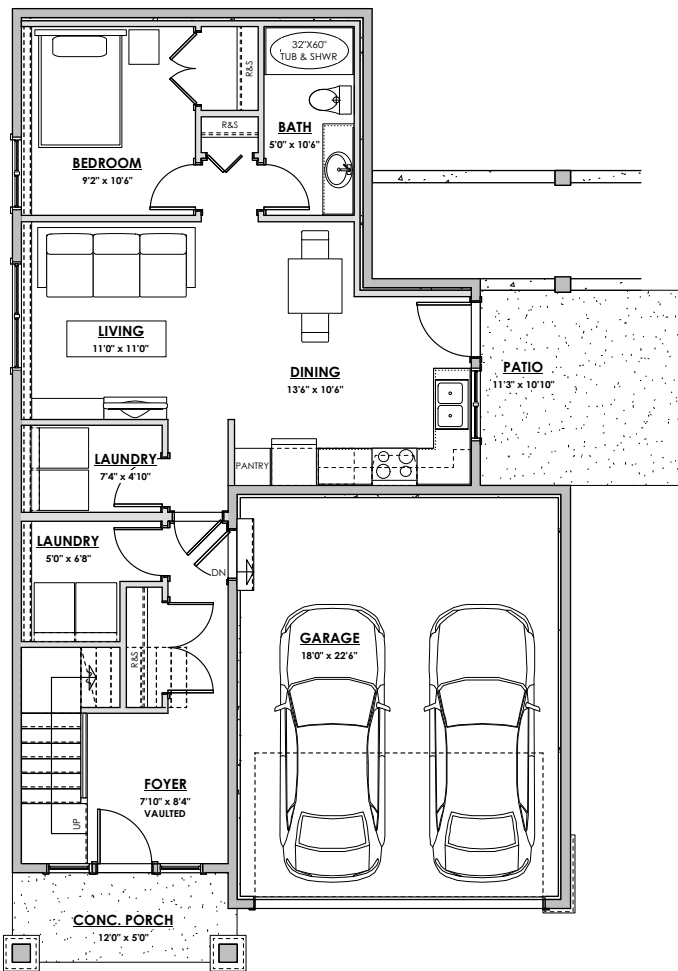
APPENDIX "C"

QUALITY CONSTRUCTION. TRUSTED SERVICE.



**LOT 50**  
**221 CASPIAN DRIVE**  
**'NAUTICAL' CRAFTSMAN**

\*NOTE: In the interest of maintaining high standards, the developer reserves the right to modify plans, specifications and design without prior notice. Drawings contained within are artist renderings only.  
 Sizes and dimensions are approximate and may vary with actual plan and survey. Exterior style may change pending municipal approval.  
 Retaining wall location and types may vary and are subject to municipal, engineering or developer discretion. Subject to change without notice.  
 Furniture as shown on plans are for layout purposes only and are not included in the sale.



<b>LIVING AREA</b>	
Primary:	1454 sq.ft.
Suite:	620 sq.ft.
Total:	2074 sq.ft.
<b>OTHER</b>	
Garage:	447 sq.ft.

APPENDIX "C"



QUALITY CONSTRUCTION. TRUSTED SERVICE.

LOT 52  
229 CASPIAN DRIVE

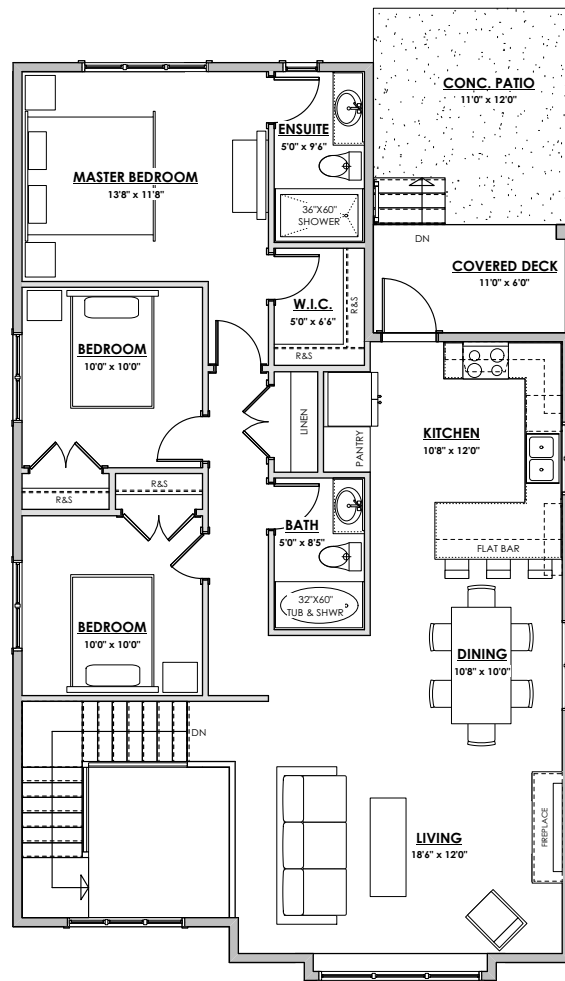
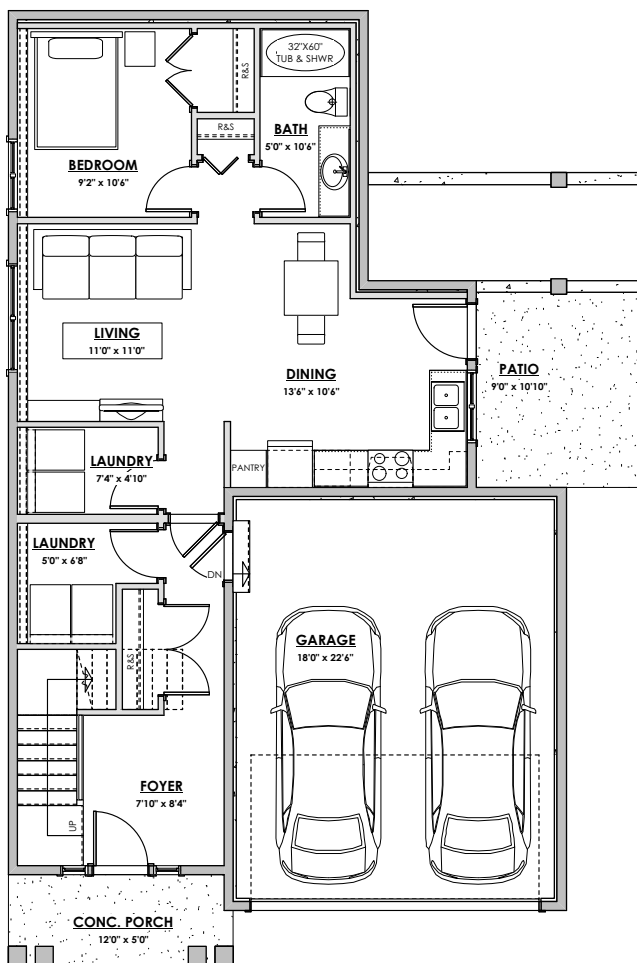
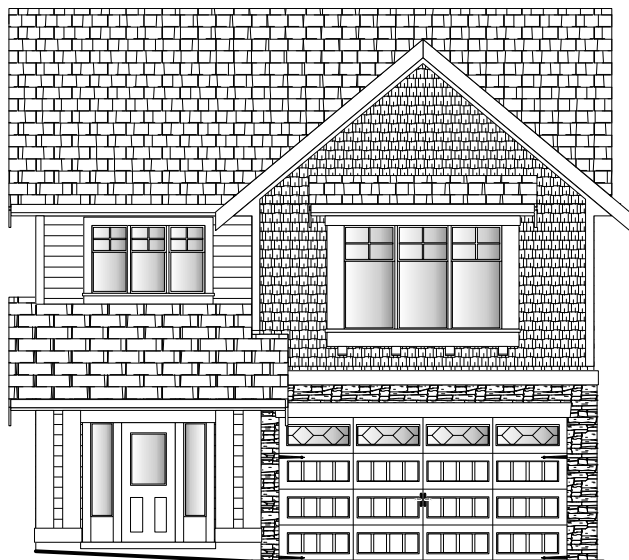
'NAUTICAL' TRADITIONAL

\*NOTE: In the interest of maintaining high standards, the developer reserves the right to modify plans, specifications and design without prior notice. Drawings contained within are artist renderings only.

Sizes and dimensions are approximate and may vary with actual plan and survey. Exterior style may change pending municipal approval.

Retaining wall location and types may vary and are subject to municipal, engineering or developer discretion. Subject to change without notice.

Furniture as shown on plans are for layout purposes only and are not included in the sale.



**Initials Required**

<b>LIVING AREA</b>	
Primary:	1454 sq.ft.
Suite:	620 sq.ft.
Total:	2074 sq.ft.
<b>OTHER</b>	
Garage:	447 sq.ft.

APPENDIX "C"

QUALITY CONSTRUCTION. TRUSTED SERVICE.

**LOT 54**  
**237 CASPIAN DRIVE**  
**'NAUTICAL' COASTAL**

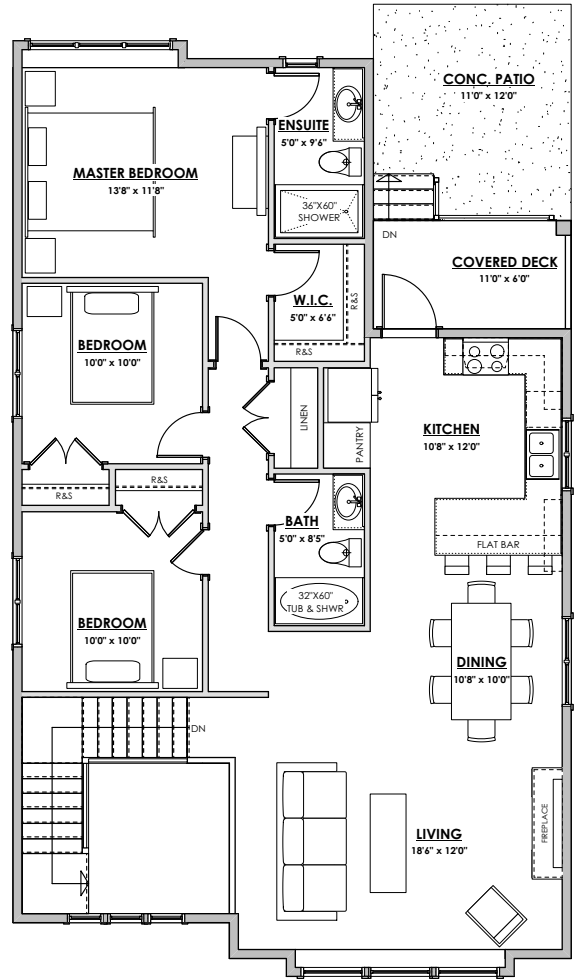
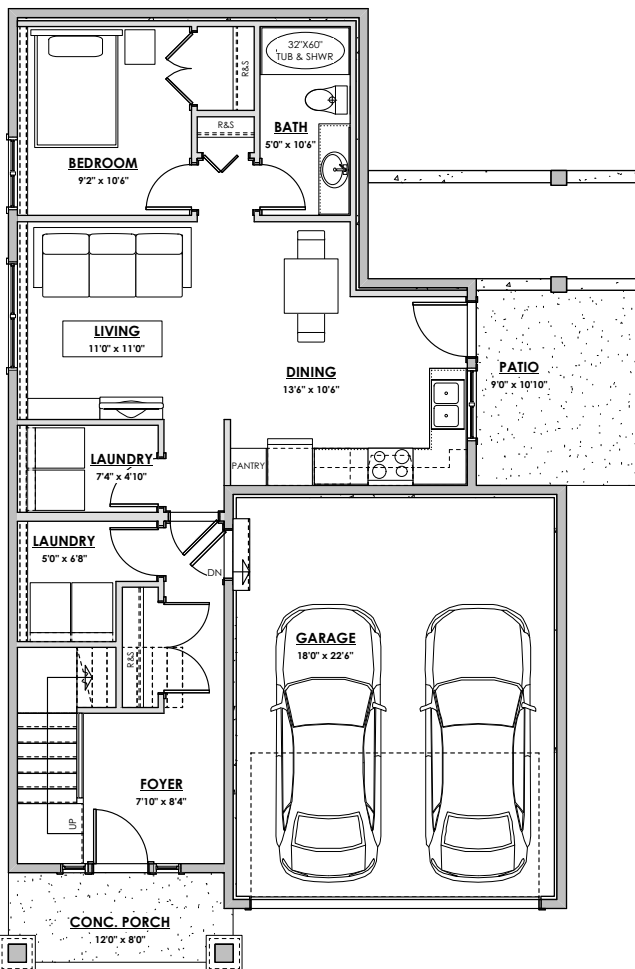


\*NOTE: In the interest of maintaining high standards, the developer reserves the right to modify plans, specifications and design without prior notice. Drawings contained within are artist renderings only.

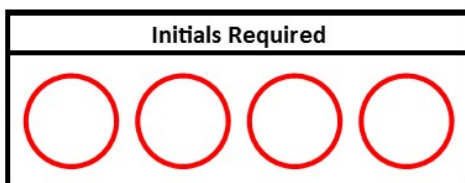
Sizes and dimensions are approximate and may vary with actual plan and survey. Exterior style may change pending municipal approval.

Retaining wall location and types may vary and are subject to municipal, engineering or developer discretion. Subject to change without notice.

Furniture as shown on plans are for layout purposes only and are not included in the sale.



**LOWER FLOOR**  
857 sq.ft.



**MAIN FLOOR**  
1217 sq.ft.

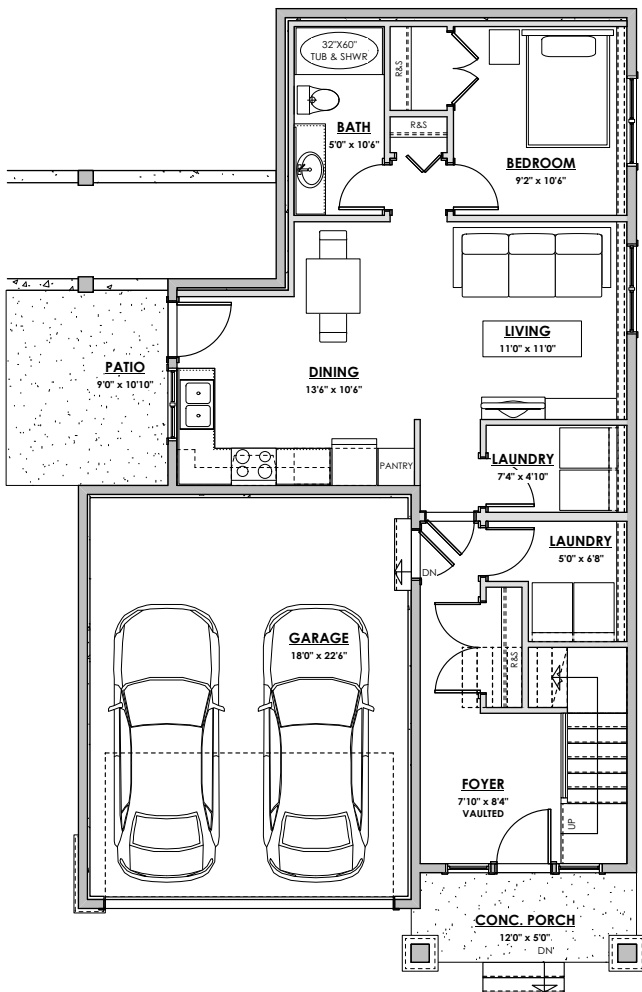
<b>LIVING AREA</b>	
Primary:	1454 sq.ft.
Suite:	620 sq.ft.
Total:	2074 sq.ft.
<b>OTHER</b>	
Garage:	447 sq.ft.

QUALITY CONSTRUCTION. TRUSTED SERVICE.



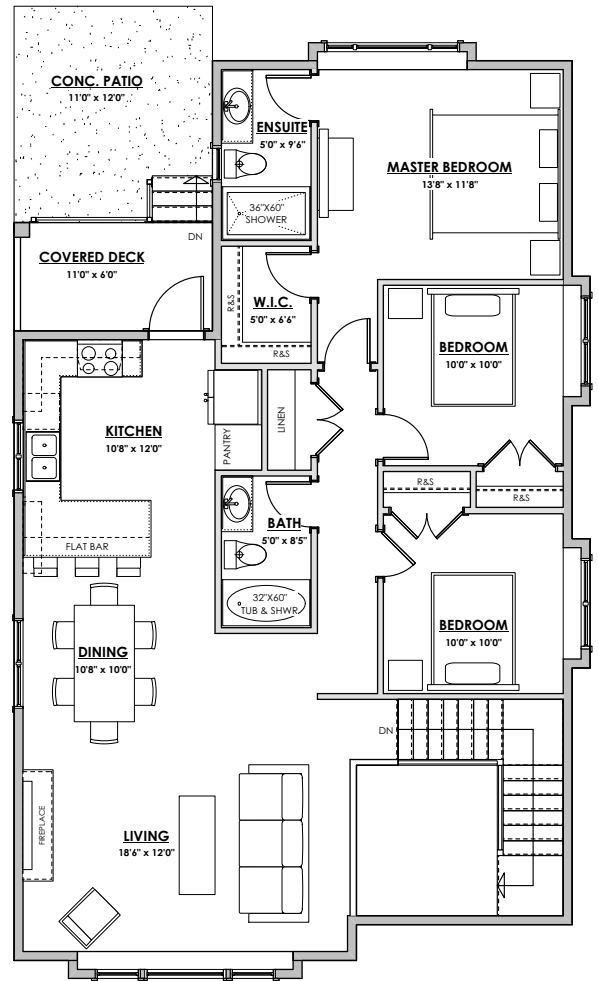
**LOT 55**  
**241 CASPIAN DRIVE**  
**'NAUTICAL' CRAFTSMAN**

\*NOTE: In the interest of maintaining high standards, the developer reserves the right to modify plans, specifications and design without prior notice. Drawings contained within are artist renderings only.  
Sizes and dimensions are approximate and may vary with actual plan and survey. Exterior style may change pending municipal approval.  
Retaining wall location and types may vary and are subject to municipal, engineering or developer discretion. Subject to change without notice.  
Furniture as shown on plans are for layout purposes only and are not included in the sale.



**LOWER FLOOR**

857 sq.ft.



**MAIN FLOOR**

1217 sq.ft.

**LIVING AREA**

Primary: 1454 sq.ft.  
Suite: 620 sq.ft.  
Total: 2074 sq.ft.

**OTHER**

Garage: 447 sq.ft.

Initials Required

